



JULY, 2011
Volume 11, Issue 7

**The Oldest and Finest of Coeur D' Alene, Idaho...
We Do It Right!**

Back Country ATV Assn. Inc.
Of Coeur D' Alene, ID
Mailing Address:
595 Hayden, ID 83835
www.backcountryatv.org

EFFECTIVE JULY 1, 2011

NEW MANDATORY OFF-HIGHWAY VEHICLE (OHV) EDUCATION LAW IN EFFECT FOR IDAHO.

IDAHO (May 12, 2011) during the 2011 legislative session, the Idaho Recreation Council worked with legislators to pass SB1001. The passing of this bill brought a couple of key changes to Off-Highway Vehicle (OHV) education requirements in Idaho.

How does this impact you?

All unlicensed riders who wish to operate an OHV on National Forest roads are required to take an OHV safety course.

All riders age 15 and under who wish to operate an OHV on roads must be supervised. The definition of supervision was clarified to mean that if you are riding on any road with your child you must be in a position to provide close support, assistance or direction. If you are not riding with your child you must be within 300 ft when supervising their operation on any road. You must be in a position to provide close support, assistance or direction.

Learn more:

Helpful links and answers to frequently asked questions are available here:
<http://parksandrecreation.idaho.gov/recreation/mandatoryeducation.aspx>

To obtain additional information on OHV classes near you, visit:
www.parksandrecreation.idaho.gov or email ohveducation@idpr.idaho.gov

EDITORIAL PROVIDED BY
Ken Chrisp

**Just a
reminder...
July dues are
now due**

WELCOME ABOARD

Back Country ATV Association would like to welcome our newest member:

Ryan, Charlene
Kody, Daisey
Blowers

Roger, Stephanie
Saterfiel

We are very excited to have you join and we look forward to many rides with you.

WELCOME!!!

The Board meeting and the General meeting will both be held at the IHOP on 4th Street in Coeur D' Alene.

BOARD AND GENERAL MEETINGS: The board meeting will begin at 5:30PM just prior to the general meeting at 7:00PM, on the THIRD Tuesday of each month.

New applications/ brochures with our new address are now available. If you would like to have some to hand out or know of a business that would like to have some for their customers, please contact Ken or Kathy Chrisp at 509-473-9032

Special Ride this Fall for Jeff Knowles

When planning your next vacation, load up your 4-wheelers and UTV's and come join us for a great riding experience. You will access trails right from your camp site and down the city streets. Utah is the friendliest ATV State in the country! We want you to join in and ride with us. I thought North Idaho had some of the greatest trails until we discovered Utah. If you like the trails around Wallace, then multiple it by 100. Like to fish? Pack your fishing gear and get ready to fish off of the trails.

There are many small towns along the way to gas up and get some great food.

When making your reservations, tell them you heard about it fro Jeff and Jeanne and I will make sure you get a great deal on your stay. Let me

know when you are heading our way and I will plan a great outing to make sure you see some spectacular sights.

Lizzie and Charlie's RV/ATV Park is located in the heart of Paiute Trail in Marysville, found in South Central Utah. The Paiute Trail is a 238 mile loop over 3 mountain ranges offering over 800 miles of intersecting trails, travel through many small towns, offering food, accommodations, gas and enjoyment for those who want to experience a great trail riding vacation.

Lizzie and Charlie's RV/ ATV Park is located approximately 890 from you in North Idaho, a

quick 15 hour trip down Interstate 15. We have over 100 RV spaces, 10 cabins and 2 or 3 bedroom cottages available along with many tent sites. So, next summer, get the gang together and make the trip down here, you will not be disappointed. As Earl always said "Let's Ride".
Contact Information:

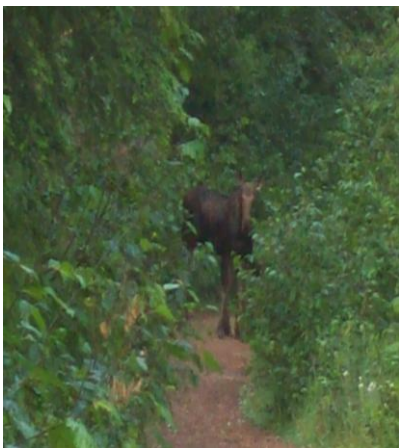
Lizzie and Charlie's RV/ATV Park
99 South Main (Hwy 89)
Marysville, Utah 84750 435-326-4213
www.lizzieandcharlies.com

The new 2011 Motor Vehicle Use Map are now out and can be picked up at Fernan Ranger office.

MEMBERSHIP DRIVE

We are having a membership drive. The person who gets the most new members, will receive \$100 at the August, 16th meeting. All you have to do is write your name on the application to get credit for the new member. If you need applications... you can either print them off of our website or call Ken Chrisp at 509-473-9032.

There are new things Added to the end of The newsletter. Take a look and let us know what you think!!



You never know what you might see up on the Bunco.

CLUB OFFICERS/ COMMITTEE

OFFICERS

PRESIDENT: Ken Chrisp
509-473-9032
klchrisp@comcast.net

VICE PRESIDENT:
Frank Traver
687-1362
frtraver@roadrunner.com

SECRETARY: Kathy Chrisp
509-473-9032

TREASURER: Janine Lilja
687-0296

WEBMASTER: Myrna Rasmussen
iDESIGN, LLC

DIRECTORS

Bill Tapper 772-3673
wtapper@roadrunner.com

Jim Bennett 765-1014
Eaglejim00@yahoo.com

Gordon Ingraham 509-844-8133
glingraham@comcast.net

Robert DesMarais 773-0911
Ro13ert2008@hotmail.com

Robert Lilja 687-0296
Paws98@peoplepc.com

Newsletter Editor: Trish Boggess 509-954-4981
patriciaboggess@comcast.net

Ride Coordinator: Chris Bennett 509-951-1090

FOR SALE

1. **Dust Masks:** I have many color and designs available. They are adjustable to fit and work great in the cold, pollen and dust. Machine washable. \$12 each. Call Bert at 208.683.0526
2. If you would like to have a T-shirt made up for you, let Kathy know and we can get this done for you. Call 509.473.9032
3. For your Information: Rathdrum Drugs, where our Logo's are printed, now have in stock various colors of long sleeve T-shirts. They also carry short sleeve T-shirts with a front pocket. If you would like one, ask for Pam at the drugstore and she will put a logo on it for you. These shirts are hard to find.
4. **Black and Chrome license plate frames.** \$12.50 ea. See Kathy or call 509-473-9032

CLUB MEMBERS REMEMBER...

THIS IS YOUR NEWSLETTER. IF YOU HAVE ANYTHING YOU WOULD LIKE TO CONTRIBUTE TO THE NEWSLETTER PLEASE CONTACT KEN OR KATHY CHRISP. THIS IS YOUR VOICE... USE IT.

YOU MAY HAVE SOMETHING TO SELL, WORDS OF WISDOM, SOMETHING NICE TO SAY ABOUT SOMEONE OR SOMETHING, PICTURES OR JUST WANT TO BE A PART OF THIS NEWSLETTER, SPEAK OUT.

WE NEED ARTICLES AND YOU ARE OUR REPORTERS!!

RATHDRUM DAYS PARADE

We have been invited to participate in the Rathdrum Days Parade on July 16, 2011 the theme for it is "back in the day " (pioneer days, the olden days) I think it would be fun and get the club some exposure. We have had a good response to this, there for those of you that would like to participate and have not responded we need a head count for the Rathdrum Days Committee. **Please call Gordon Ingraham at 509-844-8133 or Kathy Chrisp at 509-473-9032 as soon as possible.**

DID YOU KNOW?

Upon presentation of your club card you can receive a 20% discount on meals at IHOP, 10% discount on all accessories at CDA Polaris, 10% discount from Mays Honda in Sagle, ID towards all parts and accessories and last but not least CDA Honda will give you a 10 % discount on all accessories



As you have all noticed by now, the Paiute Trail article has been in the last few news letters. I wanted to let you know that Bert and I have made our reservations for the 10th of September for a week. It sure would be great to have some other club members show up. From what I hear, we could get a discount on our camping fees if we get a group to come down. I have some of the prices for the campground and they are as follows:

Cabins \$75.00 and up per day (there are different size cabins), RV spaces \$29.00, they also have dry camping available.

I suggest that you make your reservations early, as September is a good time to ride. Any earlier, it is too hot. You can call them at 435.326.4213. Hope to see a bunch there. It will be a lot of fun to ride where the place is ATV friendly.

Richard Lambert



Paiute trail photos

BACK COUNTRY ATV CLUB RIDE SCHEDULE 2011

It would be great if everyone wore helmets this year, and if you happen to have a radio... bring it along too. I am sure there is going to be more road riding this year thanks to our Forest Service



ALL RIDES ARE SUBJECT TO CHANGE

SUGGESTED RIDING SKILL LEVEL

- EASY** – Beginning rider skills, mostly flat trails, no side hills, stay on designated trails
- INTERMEDIATE**- Experienced riding skills RECOMMENDED, roads/ trails, possibly some steep slopes, side hills or loose rocks
- COMBINATION** – Combination of difficulties, various terrains. For example intermediate to difficult abilities
- DIFFICULT** – Experienced riding skills REQUIRED, trails requiring 4WD, obstacle navigation, rocky, side hills and slower travel

INTERMEDIATE ~ SATURDAY ~ JULY 9TH ~ 8:30AM
Sandpoint to Baldy Mountain Ride

Go North on Highway 95 through Sandpoint to Ponderay. Follow Highway 95 towards Canada. Turn left at Schweitzer Mountain Road and park at the Bonner County Fairgrounds. Leaving our ride will go up Baldy Mountain Road via somewhat challenging trails to Baldy Mountain. This ride is lots of fun and very scenic with nice views looking down onto the city of Sandpoint and across the lake. This ride is approximately 65 miles long.

INTERMEDIATE ~ SUNDAY ~ JULY 17TH ~ 9AM

Pack River Ride B.B.Q. lunch at Roman Nose Lake

From Sandpoint, travel North on Highway 95 to the upper Pack River Road (approximately 11 miles). Turn left and head approximately 8-9 miles to the large parking area (both sides of the road). This area will be our staging area. This ride is an **INTERMEDIATE** ride with a river crossing. There is an alternate **EASY** route which bypasses the water crossing. This will be an ALL DAY RIDE so bring snacks, beverages and sides. Lunch will be provided at Roman Nose Lake by Sandpoint Marine and Motor Sports.

INTERMEDIATE ~ SATURDAY ~ JULY 23RD ~ 9AM

Strong Creek ride, Hope to Porcupine Lake

We will be leaving from the Hope Grade School parking lot off of Sam Owens Road. Take Highway 200 East of Sandpoint through Hope to Sam Owens Road, Peninsula Road. Turn right and then make an immediate left turn up the hill to the parking area. Bring your lunch and it is advised you may also need extra gas so be prepared and bring gas with you. This is a challenging ride with a tight trail and a river crossing.

EASY ~ SATURDAY ~ AUGUST 6TH ~ TBA

Night Ride ~ More information to come

FRI/ SAT/ SUN ~ AUGUST 12, 13 AND 14

Campout/ Motel at Avery Weekend

Campout/ Motel weekend in Avery. There will be a variety of rides ranging from **EASY** to **INTERMEDIATE**.

FRI/ SAT/ SUN ~ AUGUST 26, 27 AND 28

Priest Lake Campout/ Motel Weekend

Due to the lack of experience with this area, this weekend adventure will require a certain amount of exploration

INTERMEDIATE ~ SATURDAY ~ SEPTEMBER 10TH ~ TBA

Dismal Lake Ride

We will ride to a small lake south of Avery. We will travel on all types of roads. Beginner to UTV ok , just remember 145 miles is a long day. Bring your lunch and extra gas for your ATV unless you can make it 115 miles to a gas station in Avery.

EASY ~ SUNDAY ~ SEPTEMBER 18TH ~ TBA

Clark Fork to Spion Kop

Park at the Clark Fork High School parking lot. This is an **EASY** ride but it will be approximately 100 miles long. Bring your lunch and extra gas if needed. There are some impressive views on this ride so bring your camera.

INTERMEDIATE ~ SATURDAY ~ SEPTEMBER 24TH ~ 9AM

Earls Ride

On this ride, we will be leaving from the Wallace parking lot. This is guaranteed to be a great ride! Lunch will be available in Murray or you may bring your own lunch.

FARMERS INSURANCE OF HAYDEN 157 Hayden Ave. ~ Hayden ~ 772-6058

SATURDAY ~ OCTOBER 1ST ~ TBA

Coeur D' Alene River Ride

EASY ~ SATURDAY ~ OCTOBER 8TH ~ 8AM

Clark Fork

We will leave from the Bunco Parking Lot. We are leaving earlier due to the longer distance (approximately 110 miles). Bring your own lunch and extra gas for your ATV, or you can also get both in Clark Fork.

EASY SATURDAY ~ OCTOBER 22ND ~ 8AM

Silver Dollar Bar Ride

We will be leaving from the Wallace Parking Lot. Take exit 61 and go to the stop sign at the bottom of the ramp. Turn right then cross the street into the big dirt parking lot on the left. UTV friendly. We will have lunch at the Silver Dollar Bar or you may bring your own lunch. Gas is available at the bar or you can also bring your own gas if you think you may need it along the way. This ride is approximately 110 miles round trip.

BUSINESS MEMBERS

ACE HARDWARE

1217 N. 4th St. ~ CDA ~ 773-1581

1604 E. Seltice Way ~ Post Falls ~ 773-1581

ALLSPORT POLARIS HONDA

E. 19505 E. Broadway Ave ~ Liberty Lake, WA ~ 509-962-5044

ATV TRACKS.NET

W. 1021 NW Blvd ~ Spokane, WA ~ 509-326-1207

CDA HONDA

2745 Seltice Way ~ CDA ~ 765-5005

CDA POLARIS

6040 E. Seltice Way ~ CDA ~ 664-3601

CHARLES YERNAN EXCAVATING	2493 E. Eight Mile ~ Athol ~ 818-4533
EDGE PERFORMANCE	11494 N. Warren ~ Hayden ~ 762-9025
EMPIRE CYCLE AND POWER SPORT	7807 E Sprague ~ Spokane, WA ~ 509-892-6368
ENAVILLE RESORT (SNAKE PIT)	1480 CDA River Rd. ~ Kingston ~ 682-3453
ERICKSON RV	425 E. Borah ~ CDA ~ 659-4594
HAPPY HERMIT RESORT	PO Box 1324 ~ Post Falls
HAUSER MARKET AND SMOKE SHOP	26913 W. Hwy 53 ~ Hauser ~ 773-5571
HELMET OUTLET USA.COM	5648 N. Govt. Way ~ Dalton Gardens ~ 762-3668
IHOP	2301 N. 4 th Street ~ CDA ~ 667-9600
OXARC	7321 E. Trent Ave. ~ Spokane, WA 509-921-5938
INTERMOUNTAIN SECURITY	14375 Rockwood Ct. ~ Rathdrum ~ 667-4915
KENNY V'S AUTO AND TIRE	110 E. Appleway ~ CDA ~ 765-6710
LIFETIME ROOFING AND SIDING	314 N. Division ~ Kellogg ~ 784-1363
MAYS HONDA	30 Gun Club Rd ~ Sagle ~ 263-4212
MIKES POWER SPORT	10625 E. Sprague ~ Spokane Valley, WA ~ 509-891-4300
MR. TIRE	PO Box 276 ~ Athol ~ 683-2195
NORTH IDAHO PROPANE	PO Box 2096 ~ Hayden ~ 772-6719
PANHANDLE RIDERS ASSOCIATION, SANDPOINT, ID	Brian Dunham ~ 255-6531
PETSTOP	10464 N. Govt. Way ~ Hayden ~ 762-4474
SPECIALTY RECREATION	772 W. Kathleen Ave. ~ CDA ~ 667-3571

Showcase your business here. How? Just like May's Honda of Sagle, ID. (see below) Give us a business card, write us a paragraph about your place of business, monthly specials, or just introduce yourself. See yourself in color. Contact Ken Chrisp for more information.

Below are a just a few of our favorite people (in no particular order). You could be here too!!



Every Season,
Every Adventure.

Casey Morrisroe

General Manager

208.667.3571

1.888.567.5664

fax: 208.667.3574

www.specialtyrecreation.com

772 West Kathleen Avenue

Coeur d'Alene, ID 83815

Polaris | Kawasaki | Chris Craft | Stingray | Rinker

GO FAR EXPLORE MORE

ATVTRACKS.NET

RON DUKOVICH
(866) 243-8359
(509) 326-1207
W. 1021 NW BLVD
SPOKANE, WA 99205

COEUR D'ALENE POLARIS

POLARIS
The Way Out.

Bryan Harman
6040 E. Seltice Way
Post Falls, ID 83864
Phone: 208-664-3601
Fax: 208-664-3705

ALLSPORT

WWW.ALLSPORTRACING.COM

POLARIS The Way Out. YAMAHA

HONDA VICTORY MOTORCYCLES

Eric Holt
Owner
ERICH@ALLSPORTRACING.COM

PHONE: 509.926.5044 - 19505 E. BROADWAY AVE - LIBERTY LAKE, WA 99016

Kenny V's Auto & TIRE SERVICE

110 E Appleway Ave
Coeur D'Alene ID 83814
208-765-6710 shop
509-954-9765 cell

Ken Verhaag
ken@kennyvs.com

YOUR EVERYTHING HONDA DEALER

cdahonda.com

Darrell Sims
Owner

Motorcycles
ATV's & MUV's
Watercraft
Power Products

(208) 765-5005
(800) 819-5947
2745 Seltice Way
Coeur d'Alene
Idaho 83814

Coeur d'Alene HONDA MOTORSPORTS

AND.....

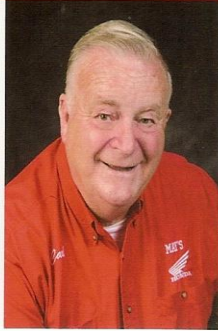
MAY'S HONDA SALES

Walter "Carl" May
Owner

30 Gun Club Road & Highway 95
Sagle, Idaho 83860
(208) 263-4212 • Fax: (208) 263-2067

 **HONDA**
Come ride with us.
Motorcycles & ATV's

HONDA
Power
Equipment
Nothing's easier.



DEBBIE ELLIS (509)-892-6368

EMPIRE CYCLE

POWER SPORTS



7807 E. SPRAGUE AVE SPOKANE, WA 99212
www.empire-cycle.com

MIKE WARREN

509-891-4300

MIKE'S POWERSPORT SUPPLY

10625 E. SPRAGUE
SPOKANE VALLEY, WA 99206

MIKESPOWERSPORTS@YAHOO.COM

"Motorsport Accessories for Less"

STREET ☆ MOTOCROSS ☆ ATV ☆ SNOWMOBILE

**HELMET**
OUTLET USA.COM

Mike Murphy
Owner

5648 N. Gov't Way • CDA, ID 83815 • (208) 762-3668
visit us @ www.HelmetOutletUSA.com